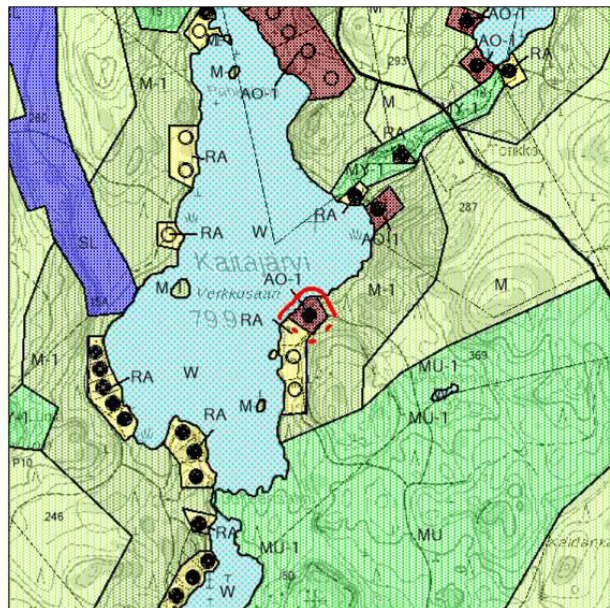
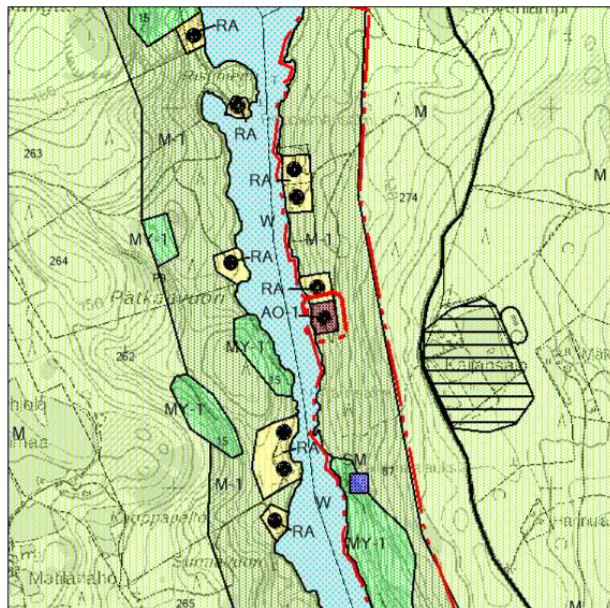


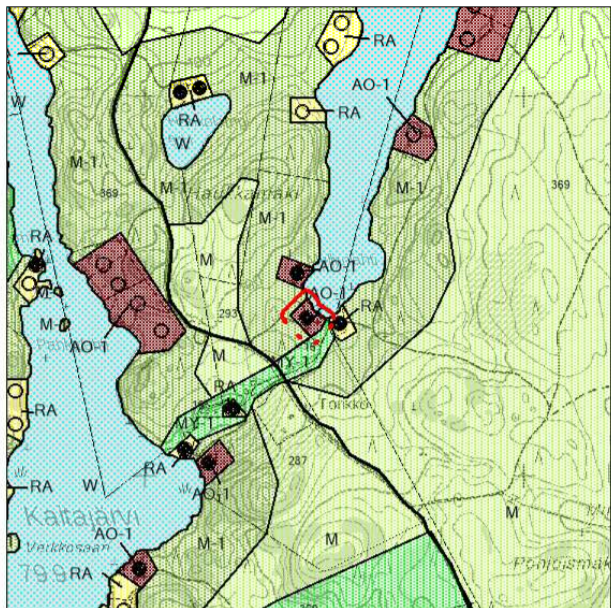
KOHDE P1



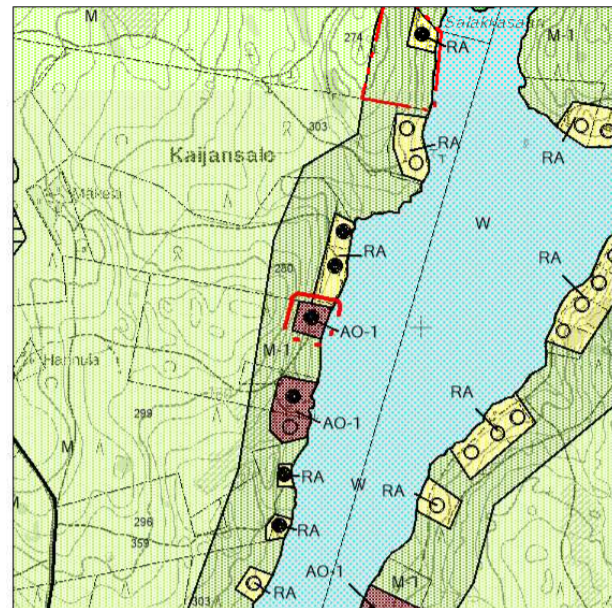
KOHDE P2



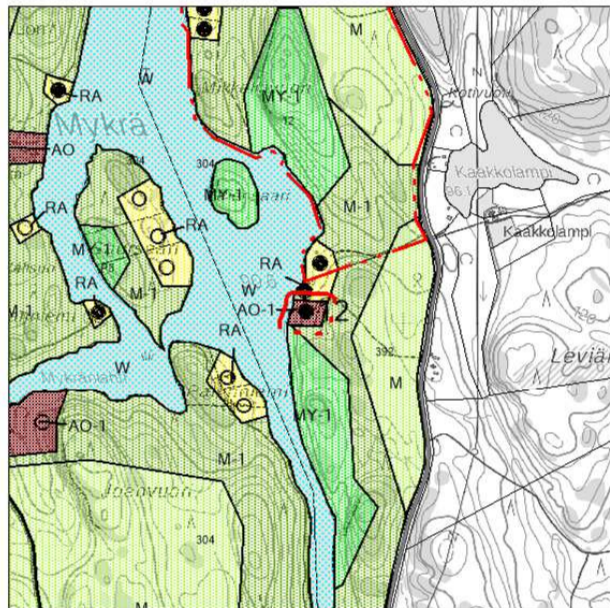
KOHDE P3



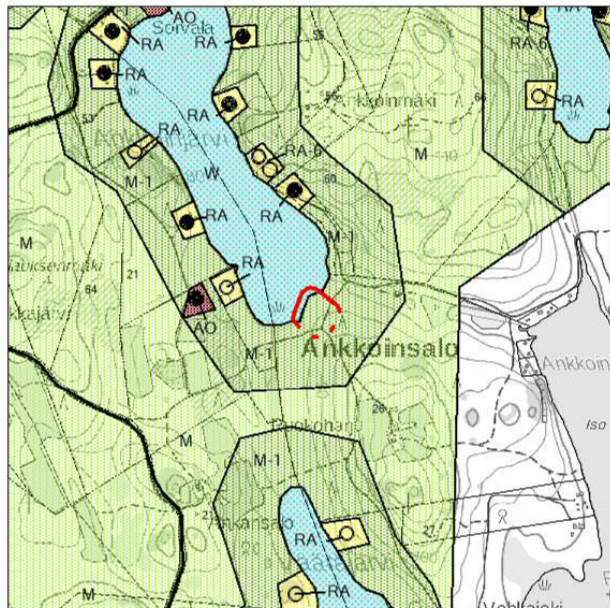
KOHDE P4



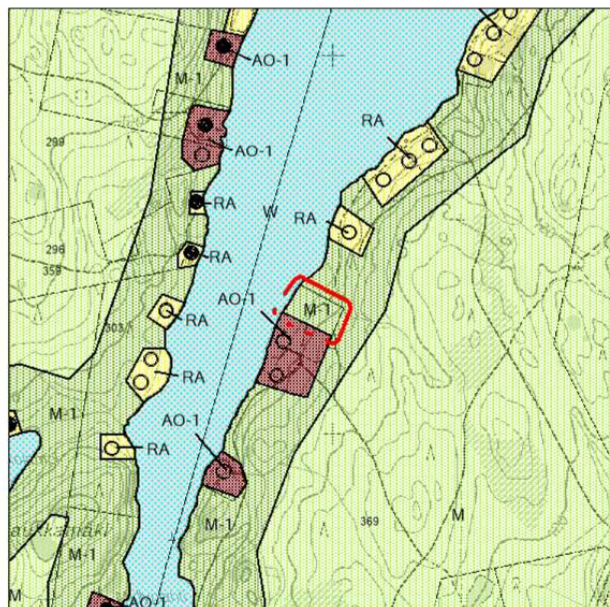
KOHDE P5



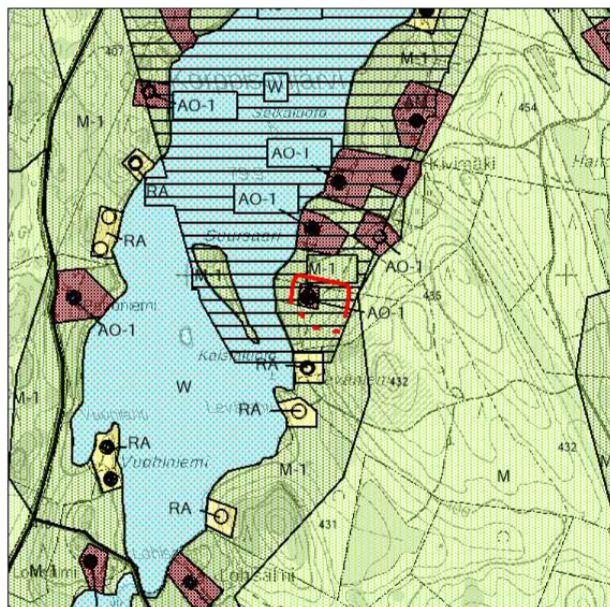
KOHDE P6



KOHDE P7



KOHDE P8



MUUTOSKOHTEIDEN P1-P8 SIJAINNIT



PUUMALAN KUNTA
RYHÄLÄN OSAYLEISKAAVAN MUUTOS
 Kartta 2, kohteet P1-P8
15.10.2020

Ehdotusaineisto nähtävillä MRL 65 § ja MRA 19 §: 8.4. -11.5.2020
 Hyväksytty kunnanvaltuustossa:
 Saanut lainvoiman:

1:20 000

Järvi-Saimaan Palvelut Oy